

Just Around the Woody Bend by Lindsay Jarrett



This hike was designed for smaller kids because it stays on the carriage trails. However, if an adventurous child wants to wander off with a parent, there are plenty of side trails that will always lead back to larger ones. A nice feature of these trails is that it's hard to get lost, there are plenty of roads around the trails and large buildings, but no one should ever walk in the woods alone and without a map.

The land was originally owned by General Charles Jackson Paine. He was the grandson of Robert Paine, who was a signer of the Declaration of Independence. General Paine bought land in Weston for a farm. He had 700 acres from Boston Post Road to Highland Street and even to Wellesley Street. He was even able to have two half-mile racetracks for his horse. About 200 acres were later bought and added to Weston Town Forest.

Recommended Hike

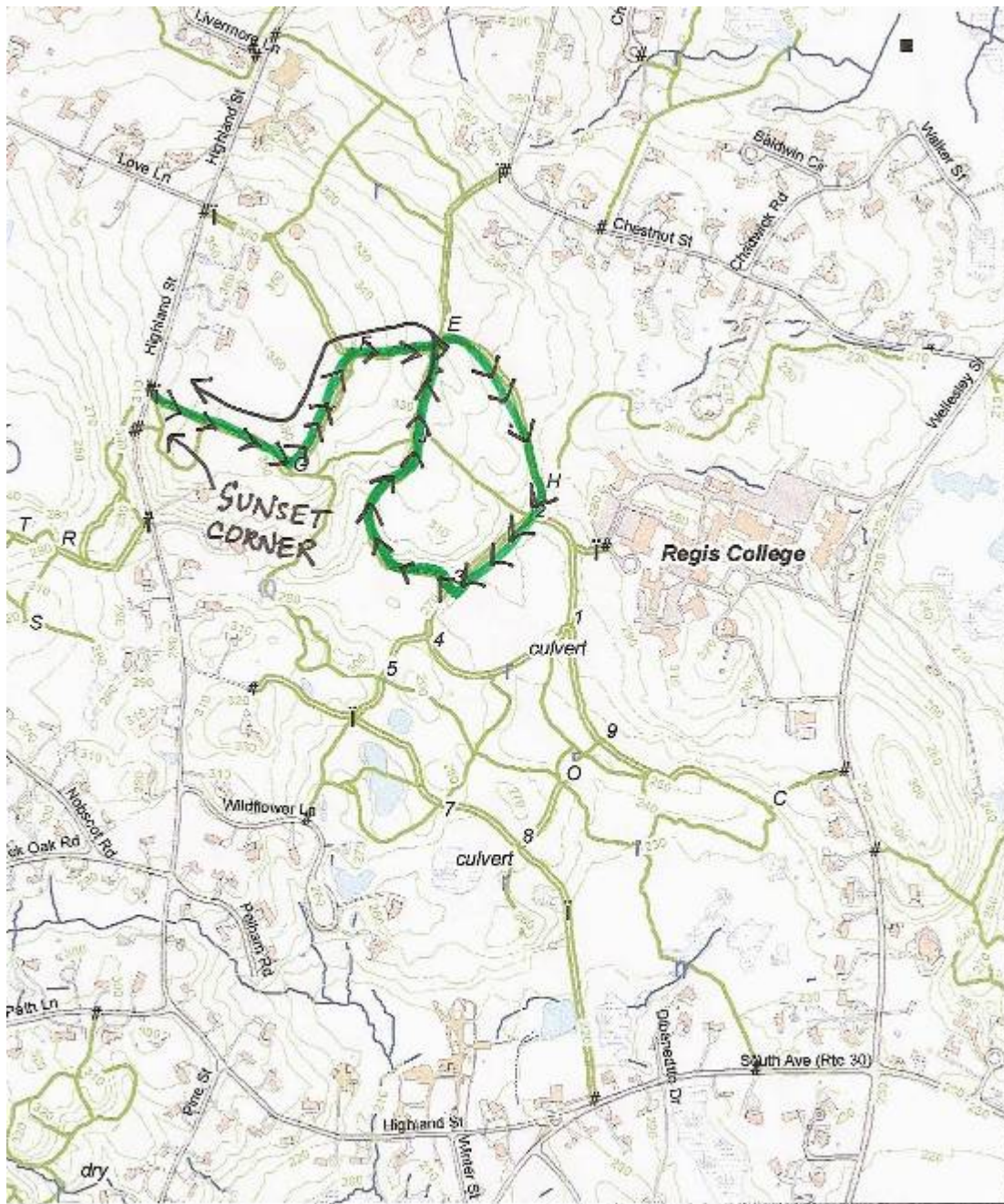
For a pleasant hike, park at a turn-off on the western side of Highland Street, about a mile south of Route 20. Just across the street from this parking spot is the start of this hike. Cross the street (be careful because Highland Street is busy) and you will see the trail entrance into the woods. Soon after you start

up the trail, there is a right turn. If you want to see a great view, turn right and head diagonally uphill. There is a great view to the west. This spot is a lovely place to view the sunset at dusk. You can see Reeves Hill, Nobscot Hill, Mt. Wachusett and even Mt. Monadnock in clear weather. This is a place where the sky is as beautiful as it can be right before the sun goes down. It's a good thing the Paine family decided to donate this viewpoint to the town so that the view could be enjoyed by us!



After you've had enough viewing, turn around and descend back to re-join the main trail on which you started and turn right. Walk up towards intersection G.





Just Around the Woody Bend

At this intersection you will need to take a left. This will take you towards intersection F where you will take a right. From E, you will reach intersection F and to get there you need to take another right. This is a longer section of the hike, and there are many piles of wood that you will pass on the left. There is also a

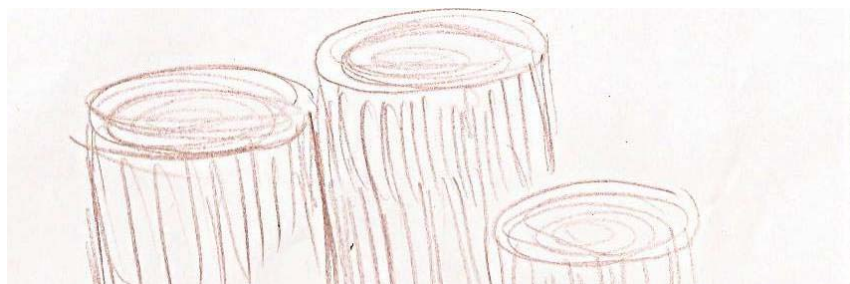
nice cluster of stumps to sit on and take a rest. At intersection H, take a right to remain on the carriage trails. From there it is a short stretch to 2. This intersection is a little confusing because there are four ways to go. There is one to the left, one to the right and one straight. The one that you must take is the trail



straight ahead of you. You will reach 3 where you will take a right. This trail is long and curves around, so don't feel like it is leading you the wrong way. There is a small stream on your left for this stretch. After a ways, you will come to intersection J and you will

keep going straight which will lead you back to E. From there you will reach E and take a left to retrace your steps to F and then another right to reach G. From G you head back to the place you parked your car.

This hike is particularly nice because you can easily add on a little loop to make the walk a longer. Also, there are shortcuts to get back to the starting point faster. There are two more places to park, one on Wildflower Lane and a spot near Love Lane. These trails are also great for mountain biking. The flat easy terrain is good for beginners but if you are brave enough to venture off to the narrower trails it can be more challenging. In the winter it is a great, wide trail to go cross-country skiing on. As long as you go in the right conditions, there are few steep hills and down hills so it's flat smooth-sailing skiing.



Some of the wildlife found in these woods is typical to the North Eastern US area. There are Oak, Maple and Birch trees. An interesting plant that can be found in these woods is the Royal Fern.

From far away it looks like a typical fern, but up close you can see that it has actual leaflets, which make it look more like a locust tree. You

have to look carefully because from far away it's hard to tell the difference between the two and maybe you'll get lucky to find the Royal Fern.



There are also many animals in the Highland forest. The shy deer may cross your path if you are quiet and in winter you can see their footprints in the snow. Tracking the animal's footprints can be a really interesting way to find out what the animals do in the woods and what kinds there are. Who knows? You may discover something new!



Just Around the Woody Bend

by Lindsay Jarrett

Just a short step passed the gate
And a world of unknown comes into sight
There is no way one can ever be late
The magic of the woods can even be seen at night
The trees, the leaves the flowers galore
Delight the undiscovered senses
Just around the woody bend you can be sure there will be more
The animals there need no fences
They run amok surrounded by the nature
And it is you're choice to venture.

January Deer

I am a January deer,
so swift and light
the hardpacked snow does not even
 crunch
beneath my hooves.
While others around me
sleep in silent caves,
 I run
through the white world
 with wide-open eyes.

Marilyn Singer



My Favorite Trail Recipe

GOLDFISH GORP

- All sorts of types of goldfish
- Raisins or Craisins
- Peanuts
- M&Ms (if you aren't going the healthy route)
- And SHAKE SHAKE SHAKE it all up!

About the Author

Lindsay Jarrett is a freshman at Weston High School and a member of troop 3064. She likes to play sports. Her favorites are soccer, field hockey, skiing and lacrosse. She likes to hike in the mountains during the summer when she's at camp. She likes to be with her friends and her family and enjoys participating in town activities. She is an avid member of her school and participates in many teams. She partakes in SADD and this year played on the freshman field hockey team during the fall, winter track team and the lacrosse team. She also participates in Weston Indoor Soccer outside of school.

